


T.C
TUNCELİ BELEDİYE BAŞKANLIĞI
ENCÜMEN KARARI

İmar ve Şehircilik

	Tunceli Valisi Belediye Başkan V. İmar ve Şehircilik Müdür V. Fen İşleri Müdür V. Mali Hizmetler Müdürü : Şefik AYGÖL Melih Melik KARA Özgür DURĞUN Metin DUYMAZ	Karar Tarihi 04-02-2026
		Karar No 13
		Evrak No 59684
		Eki
Konu : İMAR UYGULAMASI (ASKIYA ÇIKARILMASI)		
Dairesi : İMAR ve ŞEHİRCİLİK MÜDÜRLÜĞÜ		Evrak Ta.ve No : 04-05-2026 59684

KARAR

Belediyemiz Encümeni, Vali/Belediye Başkan Vekili Şefik AYGÖL başkanlığında yukarıda isimleri yazılı bulunan üyelerin iştirakiyle toplandı.


GÜNDEMİN BİRİNCİ MADDESİNDE BULUNAN: İmar ve Şehircilik Müdürlüğü'nün 04.02.2026 tarih ve 59684 sayılı yazıları ve ekleri tetkik edilerek gereği görüldü.

İlimiz Merkez Aktuluk Mahallesi, 140 ada 39, 45, 46, 47, 48, 49, 50, 51, 52, 53, 54, 55, 56, 57, 58, 60, 230 ve 231 nolu parsellerin olduğu alanlarda yapılacak olan 18. Madde uygulaması yapılması için 28.01.2026 tarih ve 9 sayılı Encümen kararı ile 18. Madde uygulaması yapılmasına izin verilmiş olup, yapılan 18. madde uygulamasının askıya çıkarılması talep edilmiştir.

Encümenimizce konu ile ilgili olarak yapılan değerlendirme sonucunda; İlimiz Merkez Aktuluk Mahallesi, 140 ada 39, 45, 46, 47, 48, 49, 50, 51, 52, 53, 54, 55, 56, 57, 58, 60, 230 ve 231 nolu parsellerin olduğu alanlarda imar uygulaması yapılması için Belediye Encümenince 28.01.2026 tarih ve 9 sayılı karar alınmış, karara istinaden hazırlanan imar 18 uygulama dosyası ve ekleriyle yapılan işlem 3194 Sayılı İmar Kanunu, Arsa ve Arazi Düzenlemeleri Hakkında Yönetmeliğe uygun olduğundan uygulama dosyası ve eklerinin 1 ay (30 gün) süre ile askıya çıkarılması oylamaya sunuldu; Oy birliği ile kabul edilerek, gereği için karardan bir suretinin İmar ve Şehircilik Müdürlüğü'ne gönderilmesine karar verildi.

Şefik AYGÖL
Tunceli Valisi
Belediye Başkan V.
(Signature)

Melih Melik KARA
İmar ve Şehircilik
Müdür V.
(Signature)



Özgür DURĞUN
Fen İşleri Müdür V.
(Signature)

Metin DUYMAZ
Mali Hizmetler Müdürü
(Signature)

İMAR
PARSELLERİ
ALAN
HESABI

İMAR PARSELLERİ ALAN HESABI

1

Ada Parsel	Hesap Alan	Nokta No	Y	X	Cephe
2620	439351.62	26200001	545323.86	4323941.08	15.47
		26200298	545309.17	4323936.24	127.80
		26200297	545197.26	4323874.50	35.84
		26200296	545161.77	4323869.50	33.07
		26200295	545129.42	4323862.63	33.14
		26200294	545097.98	4323873.09	47.33
		26200293	545050.68	4323874.50	80.89
		26200292	544973.35	4323898.24	32.68
		26200291	544941.01	4323893.45	22.55
		26200290	544918.71	4323890.14	10.42
		26200289	544916.33	4323900.29	46.55
		26200288	544869.82	4323902.48	39.08
		26200287	544845.08	4323872.23	12.33
		26200286	544833.70	4323867.47	15.36
		26200285	544818.47	4323865.52	24.13
		26200284	544795.02	4323859.82	11.23
		26200283	544783.92	4323861.45	17.83
		26200282	544768.72	4323870.76	21.03
		26200281	544749.27	4323878.78	18.14
		26200280	544731.40	4323881.84	8.88
		26200279	544722.55	4323882.55	20.69
		26200278	544702.24	4323886.52	14.56
		26200277	544687.69	4323886.80	15.04
		26200276	544673.29	4323882.43	27.59
		26200275	544647.41	4323872.88	28.82
		26200274	544620.56	4323862.43	13.58
		26200273	544607.90	4323857.50	12.42
		26200272	544595.96	4323854.11	26.26
		26200271	544570.41	4323848.05	45.25
		26200270	544526.16	4323838.56	41.60
		26200269	544486.36	4323826.43	33.03
		26200268	544453.55	4323830.22	32.49
		26200267	544427.18	4323811.23	35.69
		26200266	544395.60	4323794.60	26.84
		26200265	544374.74	4323777.72	15.08
		26200264	544361.69	4323770.18	23.61
		26200263	544342.15	4323756.93	14.59
		26200262	544329.05	4323750.48	13.46
		26200261	544315.59	4323750.44	16.85
		26200260	544298.76	4323751.04	13.24
		26200259	544285.53	4323751.51	5.33
		26200258	544280.49	4323753.23	12.64
		26200257	544268.13	4323755.91	23.88
		26200256	544246.45	4323765.91	32.93
		26200255	544219.14	4323784.31	54.37
		26200254	544169.38	4323806.23	23.55
		26200253	544146.55	4323811.99	30.26
		26200252	544116.29	4323812.64	30.84
26200251	544089.03	4323827.05	5.41		
26200250	544084.25	4323829.58	38.47		
26200249	544045.93	4323833.01	16.41		
26200248	544032.11	4323824.18	7.40		

DÜZGÜN HARİTA MÜHENDİSLİK

Ali Aytekin

Mojukay Mah. Ata Sok. 16 Ocak 2008 Yılı Harita Merkezi Kat 2 No: 7- TÜNCELİ
Tel.: 0422 232 6441 Faks: 0537 507 99 48
Oda Sicil No: 14095 Tunceli V.D. 175 027 7017

Mahmut N. ÖZİ ÖTAŞ
Harita Müh.
Dip. No: 63852

İMAR PARSELLERİ ALAN HESABI

2

Ada Parsel	Hesap Alan	Nokta No	Y	X	Cephe
		26200247	544025.87	4323820.20	20.79
		26200246	544005.17	4323818.26	27.08
		26200245	543978.15	4323820.05	23.95
		26200244	543955.28	4323827.13	30.24
		26200243	543928.06	4323840.30	8.77
		26200242	543920.16	4323844.12	13.86
		26200241	543906.54	4323846.70	4.12
		26200240	543902.50	4323847.46	18.59
		26200239	543883.94	4323846.35	59.38
		26200238	543827.41	4323864.53	39.63
		26200237	543790.06	4323877.76	68.36
		26200236	543759.95	4323816.39	72.72
		26200235	543811.56	4323765.16	73.44
		26200234	543799.88	4323692.66	43.03
		26200233	543802.35	4323649.70	5.30
		26200232	543800.27	4323644.82	65.28
		26200231	543798.78	4323579.56	7.12
		26200230	543802.90	4323573.75	76.67
		26200229	543847.24	4323511.20	3.93
		26200228	543849.78	4323508.20	56.05
		26200227	543899.89	4323533.31	8.01
		26200226	543901.90	4323525.56	2.14
		26200225	543902.25	4323527.67	2.28
		26200224	543902.86	4323529.87	3.16
		26200223	543904.01	4323532.81	2.55
		26200222	543905.19	4323535.07	2.20
		26200221	543906.38	4323536.93	2.00
		26200220	543907.60	4323538.52	2.10
		26200219	543909.00	4323540.08	1.99
		26200218	543910.45	4323541.45	2.40
		26200217	543912.32	4323542.95	1.97
		26200216	543913.95	4323544.05	2.49
		26200215	543916.12	4323545.26	63.52
		26200214	543973.06	4323573.41	33.54
		26200213	544006.17	4323578.74	3.39
		26200212	544009.54	4323579.09	3.39
		26200211	544012.93	4323579.06	3.39
		26200210	544016.29	4323578.64	14.28
		26200209	544030.49	4323577.18	5.76
		26200208	544033.89	4323572.53	9.99
		26200207	544037.41	4323563.17	3.39
		26200206	544038.82	4323560.10	3.39
		26200205	544039.87	4323556.88	3.39
		26200204	544040.56	4323553.56	3.39
		26200203	544040.86	4323550.19	126.51
		26200202	544162.18	4323514.31	46.09
		26200201	544188.05	4323476.17	80.64
		26200200	544233.60	4323409.63	3.84
		26200199	544235.83	4323406.50	5.76
		26200198	544239.41	4323401.99	1.92
		26200197	544240.63	4323400.52	3.84
		26200196	544243.20	4323397.67	3.84

İMAR PARSELLERİ ALAN HESABI

3

Ada Parsel	Hesap Alan	Nokta No	Y	X	Cephe
		26200195	544245.88	4323394.92	3.84
		26200194	544248.66	4323392.27	3.84
		26200193	544251.53	4323389.73	3.84
		26200192	544254.50	4323387.30	4.58
		26200191	544258.10	4323384.47	7.46
		26200190	544264.08	4323380.01	7.46
		26200189	544270.28	4323375.87	7.46
		26200188	544276.69	4323372.07	7.46
		26200187	544283.30	4323368.61	7.46
		26200186	544290.07	4323365.49	7.46
		26200185	544297.00	4323362.74	7.46
		26200184	544304.06	4323360.36	7.46
		26200183	544311.24	4323358.35	7.46
		26200182	544318.52	4323356.71	7.46
		26200181	544325.87	4323355.46	7.46
		26200180	544333.28	4323354.60	7.46
		26200179	544340.72	4323354.13	7.46
		26200178	544348.17	4323354.05	7.46
		26200177	544355.62	4323354.36	6.95
		26200176	544362.56	4323354.83	3.62
		26200175	544366.15	4323355.24	3.45
		26200174	544369.53	4323355.94	3.78
		26200173	544373.15	4323357.02	3.62
		26200172	544376.50	4323358.37	3.62
		26200171	544379.72	4323360.03	3.62
		26200170	544382.77	4323361.96	3.62
		26200169	544385.64	4323364.17	3.62
		26200168	544388.29	4323366.62	183.93
		26200167	544517.60	4323497.43	20.96
		26200166	544537.66	4323503.51	31.01
		26200165	544528.96	4323533.27	82.03
		26200164	544601.97	4323570.66	52.83
		26200163	544641.14	4323535.22	109.87
		26200162	544638.32	4323425.38	23.48
		26200161	544657.75	4323438.57	3.14
		26200160	544660.24	4323440.49	3.14
		26200159	544662.46	4323442.72	3.14
		26200158	544664.39	4323445.20	3.14
		26200157	544665.99	4323447.90	3.14
		26200156	544667.23	4323450.79	3.14
		26200155	544668.11	4323453.81	3.14
		26200154	544668.60	4323456.91	3.14
		26200153	544668.70	4323460.05	3.14
		26200152	544668.40	4323463.18	3.14
		26200151	544667.71	4323466.25	3.14
		26200150	544666.64	4323469.21	3.14
		26200149	544665.21	4323472.01	6.00
		26200148	544662.16	4323477.16	43.61
		26200147	544644.47	4323517.02	3.62
		26200146	544643.30	4323520.45	3.62
		26200145	544642.52	4323523.98	3.62
		26200144	544642.15	4323527.58	3.62

İMAR PARSELLERİ ALAN HESABI

4

Ada Parsel	Hesap Alan	Nokta No	Y	X	Cephe
		26200143	544642.18	4323531.20	3.62
		26200142	544642.62	4323534.79	3.62
		26200141	544643.45	4323538.31	3.62
		26200140	544644.68	4323541.72	3.62
		26200139	544646.28	4323544.96	3.62
		26200138	544648.23	4323548.01	3.62
		26200137	544650.52	4323550.82	3.62
		26200136	544653.10	4323553.35	3.62
		26200135	544655.95	4323555.58	3.62
		26200134	544659.03	4323557.48	3.62
		26200133	544662.31	4323559.01	3.62
		26200132	544665.73	4323560.18	3.62
		26200131	544669.27	4323560.95	3.62
		26200130	544672.87	4323561.32	88.28
		26200129	544761.05	4323565.38	3.20
		26200128	544764.23	4323565.73	3.20
		26200127	544767.34	4323566.47	3.20
		26200126	544770.33	4323567.59	3.20
		26200125	544773.15	4323569.08	3.20
		26200124	544775.77	4323570.91	3.20
		26200123	544778.14	4323573.05	3.20
		26200122	544780.23	4323575.47	3.20
		26200121	544781.99	4323578.14	3.20
		26200120	544783.41	4323581.00	3.20
		26200119	544784.46	4323584.02	3.20
		26200118	544785.12	4323587.14	3.20
		26200117	544785.39	4323590.33	96.06
		26200116	544787.44	4323686.36	6.54
		26200115	544783.77	4323691.77	7.23
		26200114	544777.00	4323694.30	5.03
		26200113	544772.58	4323696.71	4.85
		26200112	544768.70	4323699.61	5.20
		26200111	544765.00	4323703.28	6.11
		26200110	544761.47	4323708.26	3.94
		26200109	544759.58	4323711.71	4.19
		26200108	544758.12	4323715.64	1.67
		26200107	544757.65	4323717.24	3.75
		26200106	544756.85	4323720.91	0.88
		26200105	544756.72	4323721.78	3.85
		26200104	544756.45	4323725.62	1.47
		26200103	544756.45	4323727.09	4.29
		26200102	544756.75	4323731.37	5.03
		26200101	544757.82	4323736.28	4.67
		26200100	544759.46	4323740.66	7.52
		26200099	544763.19	4323747.18	3.25
		26200098	544765.23	4323749.71	5.85
		26200097	544769.46	4323753.75	5.84
		26200096	544774.28	4323757.04	5.84
		26200095	544779.58	4323759.48	5.84
		26200094	544785.21	4323761.01	5.84
		26200093	544791.02	4323761.60	5.84
		26200092	544796.84	4323761.22	5.84

İMAR PARSELLERİ ALAN HESABI

5

Ada Parsel	Hesap Alan	Nokta No	Y	X	Cephe
		26200091	544802.52	4323759.88	3.82
		26200090	544806.05	4323758.40	5.38
		26200089	544810.70	4323755.70	3.55
		26200088	544813.58	4323753.62	3.55
		26200087	544816.23	4323751.26	3.55
		26200086	544818.62	4323748.64	3.55
		26200085	544820.74	4323745.79	3.55
		26200084	544822.56	4323742.74	3.55
		26200083	544824.06	4323739.52	6.37
		26200082	544826.16	4323733.51	11.09
		26200081	544826.67	4323722.43	6.44
		26200080	544825.12	4323716.17	6.76
		26200079	544822.82	4323709.82	7.12
		26200078	544818.67	4323704.03	4.52
		26200077	544815.53	4323700.78	7.40
		26200076	544809.87	4323696.02	5.38
		26200075	544807.55	4323691.17	63.78
		26200074	544806.19	4323627.40	40.65
		26200073	544805.32	4323586.76	3.96
		26200072	544805.05	4323582.81	3.96
		26200071	544804.41	4323578.90	3.96
		26200070	544803.41	4323575.07	3.96
		26200069	544802.05	4323571.35	3.96
		26200068	544800.35	4323567.77	3.96
		26200067	544798.32	4323564.37	3.96
		26200066	544795.98	4323561.18	3.96
		26200065	544793.35	4323558.22	3.96
		26200064	544790.45	4323555.52	3.96
		26200063	544787.32	4323553.10	3.96
		26200062	544783.97	4323550.99	3.96
		26200061	544780.43	4323549.20	3.96
		26200060	544776.75	4323547.75	3.96
		26200059	544772.94	4323546.65	3.96
		26200058	544769.05	4323545.91	3.96
		26200057	544765.11	4323545.54	88.05
		26200056	544677.16	4323541.49	2.42
		26200055	544674.76	4323541.18	2.42
		26200054	544672.45	4323540.47	2.42
		26200053	544670.30	4323539.38	2.42
		26200052	544668.35	4323537.95	2.42
		26200051	544666.68	4323536.21	2.42
		26200050	544665.32	4323534.21	2.42
		26200049	544664.31	4323532.01	2.42
		26200048	544663.69	4323529.68	2.42
		26200047	544663.46	4323527.28	2.42
		26200046	544663.65	4323524.87	2.42
		26200045	544664.23	4323522.52	2.37
		26200044	544665.17	4323520.36	35.88
		26200043	544682.22	4323488.78	7.98
		26200042	544686.02	4323481.77	2.77
		26200041	544687.50	4323479.43	2.77
		26200040	544689.30	4323477.31	2.77

İMAR PARSELLERİ ALAN HESABI

6

Ada Parsel	Hesap Alan	Nokta No	Y	X	Cephe
		26200039	544691.37	4323475.47	2.77
		26200038	544693.68	4323473.93	2.77
		26200037	544696.17	4323472.73	2.77
		26200036	544698.81	4323471.88	2.77
		26200035	544701.55	4323471.40	2.77
		26200034	544704.32	4323471.31	2.77
		26200033	544707.07	4323471.60	2.77
		26200032	544709.76	4323472.27	2.77
		26200031	544712.34	4323473.30	2.77
		26200030	544714.74	4323474.68	80.97
		26200029	544781.99	4323519.78	55.21
		26200028	544829.71	4323547.56	42.41
		26200027	544866.45	4323568.74	42.48
		26200026	544901.58	4323592.63	5.87
		26200025	544898.66	4323597.72	34.42
		26200024	544928.41	4323615.03	17.74
		26200023	544943.90	4323623.68	17.74
		26200022	544959.53	4323632.07	17.74
		26200021	544975.30	4323640.19	17.74
		26200020	544991.20	4323648.04	17.74
		26200019	545007.24	4323655.61	35.31
		26200018	545039.54	4323669.87	118.26
		26200017	545148.53	4323715.77	17.08
		26200016	545142.18	4323731.63	84.36
		26200015	545219.93	4323764.37	16.02
		26200014	545234.43	4323771.18	15.87
		26200013	545248.19	4323779.09	18.34
		26200012	545263.23	4323789.58	14.78
		26200011	545274.59	4323799.04	15.53
		26200010	545285.72	4323809.86	12.46
		26200009	545294.00	4323819.17	17.34
		26200008	545304.50	4323832.97	15.89
		26200007	545313.02	4323846.38	20.33
		26200006	545322.27	4323864.48	19.01
		26200005	545329.18	4323882.19	20.95
		26200004	545334.75	4323902.39	16.14
		26200003	545337.55	4323918.29	19.05
		26200002	545339.10	4323937.28	15.71
		26200001	545323.86	4323941.08	1264.78
		26200299	544068.48	4323787.17	7.00
		26200300	544065.18	4323780.99	1.10
		26200301	544064.24	4323781.55	5.92
		26200302	544059.16	4323784.58	7.00
		26200303	544062.46	4323790.75	5.97
		26200304	544067.59	4323787.69	1.03
		26200299	544068.48	4323787.17	96.37
		26200305	543995.30	4323724.46	3.00
		26200306	543994.78	4323721.50	3.00
		26200307	543991.80	4323721.84	3.00
		26200308	543992.30	4323724.79	3.02
		26200305	543995.30	4323724.46	179.78
		26200309	543912.67	4323564.79	3.00

DÜZGÜN HARİTA MÜHENDİSLİK

Ali Aytemir

Mogulkey Mah. Ata Sok. Hisarhan Sok. No: 2 Kat: 2 No: 7- TÜNCELİ

Tel: 0428 217 91 41 / 0537 507 99 88

Oda Sicil No: 1485 - T.C. Harita Müh. D. 125 027 7917

Mahmut N. ÖZÜ ÖTAŞ
Mahmut N. ÖZÜ ÖTAŞ
Harita Müh.
Dip. No: 63852

İMAR PARSELLERİ ALAN HESABI

7

Ada Parsel	Hesap Alan	Nokta No	Y	X	Cephe
		26200310 26200311 26200312 26200309	543912.55 543909.55 543909.67 543912.67	4323561.79 4323561.86 4323564.86 4323564.79	3.00 3.00 3.00 1460.50
2620/1	13631.00	26200240 26200241 26200233 26200234 26200235 26200236 26200237 26200238 26200239	543902.50 543906.54 543802.35 543799.88 543811.56 543759.95 543790.06 543827.41 543883.94	4323847.46 4323846.70 4323649.70 4323692.66 4323765.16 4323816.39 4323877.76 4323864.53 4323846.35	4.12 222.85 43.03 73.44 72.72 68.36 39.63 59.38 18.59
2620/2	5572.33	26200243 26200316 26200230 26200231 26200232 26200233 26200241 26200242	543928.06 543803.31 543802.90 543798.78 543800.27 543802.35 543906.54 543920.16	4323840.30 4323605.65 4323573.75 4323579.56 4323644.82 4323649.70 4323846.70 4323844.12	265.75 31.90 7.12 65.28 5.30 222.85 13.86 8.77
2620/3	32691.88	26200248 26200247 26200246 26200245 26200244 26200243 26200316 26200230 26200229 26200319 26200318	544032.11 544025.87 544005.17 543978.15 543955.28 543928.06 543803.31 543802.90 543847.24 543886.34 543902.76	4323824.18 4323820.20 4323818.26 4323820.05 4323827.13 4323840.30 4323605.65 4323573.75 4323511.20 4323530.53 4323568.21	7.40 20.79 27.08 23.95 30.24 265.75 31.90 76.67 43.61 41.10 286.79
2620/4	14864.24	26200250 26200249 26200248 26200318 26200319 26200229 26200228 26200227 26200226 26200225 26200224 26200223 26200222 26200221 26200220 26200219	544084.25 544045.93 544032.11 543902.76 543886.34 543847.24 543849.78 543899.89 543901.90 543902.25 543902.86 543904.01 543905.19 543906.38 543907.60 543909.00	4323829.58 4323833.01 4323824.18 4323568.21 4323530.53 4323511.20 4323508.20 4323533.31 4323525.56 4323527.67 4323529.87 4323532.81 4323535.07 4323536.93 4323538.52 4323540.08	38.47 16.41 286.79 41.10 43.61 3.93 56.05 8.01 2.14 2.28 3.16 2.55 2.20 2.00 2.10 1.99

İMAR PARSELLERİ ALAN HESABI

8

Ada Parsel	Hesap Alan	Nokta No	Y	X	Cephe
		26200218	543910.45	4323541.45	2.40
		26200217	543912.32	4323542.95	1.97
		26200216	543913.95	4323544.05	2.49
		26200215	543916.12	4323545.26	63.52
		26200214	543973.06	4323573.41	29.87
		26200317	543965.91	4323602.41	11.48
		26200315	543971.35	4323612.52	70.63
		26200314	544004.85	4323674.70	69.19
		26200313	544038.86	4323734.96	53.05
		26200301	544064.24	4323781.55	5.92
		26200302	544059.16	4323784.58	7.00
		26200303	544062.46	4323790.75	5.97
		26200304	544067.59	4323787.69	44.82
		26200251	544089.03	4323827.05	5.41
		26200250	544084.25	4323829.58	137.70
		26200305	543995.30	4323724.46	3.00
		26200306	543994.78	4323721.50	3.00
		26200307	543991.80	4323721.84	3.00
		26200308	543992.30	4323724.79	3.02
		26200305	543995.30	4323724.46	179.78
		26200309	543912.67	4323564.79	3.00
		26200310	543912.55	4323561.79	3.00
		26200311	543909.55	4323561.86	3.00
		26200312	543909.67	4323564.86	3.00
		26200309	543912.67	4323564.79	315.52
2620/5	372592.17	26200001	545323.86	4323941.08	15.47
		26200298	545309.17	4323936.24	127.80
		26200297	545197.26	4323874.50	35.84
		26200296	545161.77	4323869.50	33.07
		26200295	545129.42	4323862.63	33.14
		26200294	545097.98	4323873.09	47.33
		26200293	545050.68	4323874.50	80.89
		26200292	544973.35	4323898.24	32.68
		26200291	544941.01	4323893.45	22.55
		26200290	544918.71	4323890.14	10.42
		26200289	544916.33	4323900.29	46.55
		26200288	544869.82	4323902.48	39.08
		26200287	544845.08	4323872.23	12.33
		26200286	544833.70	4323867.47	15.36
		26200285	544818.47	4323865.52	24.13
		26200284	544795.02	4323859.82	11.23
		26200283	544783.92	4323861.45	17.83
		26200282	544768.72	4323870.76	21.03
		26200281	544749.27	4323878.78	18.14
		26200280	544731.40	4323881.84	8.88
		26200279	544722.55	4323882.55	20.69
		26200278	544702.24	4323886.52	14.56
		26200277	544687.69	4323886.80	15.04
		26200276	544673.29	4323882.43	27.59
		26200275	544647.41	4323872.88	28.82
		26200274	544620.56	4323862.43	13.58

İMAR PARSELLERİ ALAN HESABI

9

Ada Parsel	Hesap Alan	Nokta No	Y	X	Cephe
		26200273	544607.90	4323857.50	12.42
		26200272	544595.96	4323854.11	26.26
		26200271	544570.41	4323848.05	45.25
		26200270	544526.16	4323838.56	41.60
		26200269	544486.36	4323826.43	33.03
		26200268	544453.55	4323830.22	32.49
		26200267	544427.18	4323811.23	35.69
		26200266	544395.60	4323794.60	26.84
		26200265	544374.74	4323777.72	15.08
		26200264	544361.69	4323770.18	23.61
		26200263	544342.15	4323756.93	14.59
		26200262	544329.05	4323750.48	13.46
		26200261	544315.59	4323750.44	16.85
		26200260	544298.76	4323751.04	13.24
		26200259	544285.53	4323751.51	5.33
		26200258	544280.49	4323753.23	12.64
		26200257	544268.13	4323755.91	23.88
		26200256	544246.45	4323765.91	32.93
		26200255	544219.14	4323784.31	54.37
		26200254	544169.38	4323806.23	23.55
		26200253	544146.55	4323811.99	30.26
		26200252	544116.29	4323812.64	30.84
		26200251	544089.03	4323827.05	44.82
		26200304	544067.59	4323787.69	1.03
		26200299	544068.48	4323787.17	7.00
		26200300	544065.18	4323780.99	1.10
		26200301	544064.24	4323781.55	53.05
		26200313	544038.86	4323734.96	69.19
		26200314	544004.85	4323674.70	70.63
		26200315	543971.35	4323612.52	11.48
		26200317	543965.91	4323602.41	29.87
		26200214	543973.06	4323573.41	33.54
		26200213	544006.17	4323578.74	3.39
		26200212	544009.54	4323579.09	3.39
		26200211	544012.93	4323579.06	3.39
		26200210	544016.29	4323578.64	14.28
		26200209	544030.49	4323577.18	5.76
		26200208	544033.89	4323572.53	9.99
		26200207	544037.41	4323563.17	3.39
		26200206	544038.82	4323560.10	3.39
		26200205	544039.87	4323556.88	3.39
		26200204	544040.56	4323553.56	3.39
		26200203	544040.86	4323550.19	126.51
		26200202	544162.18	4323514.31	46.09
		26200201	544188.05	4323476.17	80.64
		26200200	544233.60	4323409.63	3.84
		26200199	544235.83	4323406.50	5.76
		26200198	544239.41	4323401.99	1.92
		26200197	544240.63	4323400.52	3.84
		26200196	544243.20	4323397.67	3.84
		26200195	544245.88	4323394.92	3.84
		26200194	544248.66	4323392.27	3.84

DÜZGÜN HARİTA MÜHENDİSLİK

Ali Aytemir
Mojukay Mah. Ata Sok. Hisarlık 4. Blok Kat:2 No:7-TUNCELI
Tel.: 0478 616 1111 Faks: 0478 616 1112
E-Posta: info@duzgunharita.com.tr D. No: 027 7917

Mahmut N. ÖZÜ ÖTAŞ
Harita Müh.
Dip. No: 63852

İMAR PARSELLERİ ALAN HESABI

10

Ada Parsel	Hesap Alan	Nokta No	Y	X	Cephe
		26200193	544251.53	4323389.73	3.84
		26200192	544254.50	4323387.30	4.58
		26200191	544258.10	4323384.47	7.46
		26200190	544264.08	4323380.01	7.46
		26200189	544270.28	4323375.87	7.46
		26200188	544276.69	4323372.07	7.46
		26200187	544283.30	4323368.61	7.46
		26200186	544290.07	4323365.49	7.46
		26200185	544297.00	4323362.74	7.46
		26200184	544304.06	4323360.36	7.46
		26200183	544311.24	4323358.35	7.46
		26200182	544318.52	4323356.71	7.46
		26200181	544325.87	4323355.46	7.46
		26200180	544333.28	4323354.60	7.46
		26200179	544340.72	4323354.13	7.46
		26200178	544348.17	4323354.05	7.46
		26200177	544355.62	4323354.36	6.95
		26200176	544362.56	4323354.83	3.62
		26200175	544366.15	4323355.24	3.45
		26200174	544369.53	4323355.94	3.78
		26200173	544373.15	4323357.02	3.62
		26200172	544376.50	4323358.37	3.62
		26200171	544379.72	4323360.03	3.62
		26200170	544382.77	4323361.96	3.62
		26200169	544385.64	4323364.17	3.62
		26200168	544388.29	4323366.62	183.93
		26200167	544517.60	4323497.43	20.96
		26200166	544537.66	4323503.51	31.01
		26200165	544528.96	4323533.27	82.03
		26200164	544601.97	4323570.66	52.83
		26200163	544641.14	4323535.22	109.87
		26200162	544638.32	4323425.38	23.48
		26200161	544657.75	4323438.57	3.14
		26200160	544660.24	4323440.49	3.14
		26200159	544662.46	4323442.72	3.14
		26200158	544664.39	4323445.20	3.14
		26200157	544665.99	4323447.90	3.14
		26200156	544667.23	4323450.79	3.14
		26200155	544668.11	4323453.81	3.14
		26200154	544668.60	4323456.91	3.14
		26200153	544668.70	4323460.05	3.14
		26200152	544668.40	4323463.18	3.14
		26200151	544667.71	4323466.25	3.14
		26200150	544666.64	4323469.21	3.14
		26200149	544665.21	4323472.01	6.00
		26200148	544662.16	4323477.16	43.61
		26200147	544644.47	4323517.02	3.62
		26200146	544643.30	4323520.45	3.62
		26200145	544642.52	4323523.98	3.62
		26200144	544642.15	4323527.58	3.62
		26200143	544642.18	4323531.20	3.62
		26200142	544642.62	4323534.79	3.62

İMAR PARSELLERİ ALAN HESABI

11

Ada Parsel	Hesap Alan	Nokta No	Y	X	Cephe
		26200141	544643.45	4323538.31	3.62
		26200140	544644.68	4323541.72	3.62
		26200139	544646.28	4323544.96	3.62
		26200138	544648.23	4323548.01	3.62
		26200137	544650.52	4323550.82	3.62
		26200136	544653.10	4323553.35	3.62
		26200135	544655.95	4323555.58	3.62
		26200134	544659.03	4323557.48	3.62
		26200133	544662.31	4323559.01	3.62
		26200132	544665.73	4323560.18	3.62
		26200131	544669.27	4323560.95	3.62
		26200130	544672.87	4323561.32	3.62
		26200129	544761.05	4323565.38	3.20
		26200128	544764.23	4323565.73	3.20
		26200127	544767.34	4323566.47	3.20
		26200126	544770.33	4323567.59	3.20
		26200125	544773.15	4323569.08	3.20
		26200124	544775.77	4323570.91	3.20
		26200123	544778.14	4323573.05	3.20
		26200122	544780.23	4323575.47	3.20
		26200121	544781.99	4323578.14	3.20
		26200120	544783.41	4323581.00	3.20
		26200119	544784.46	4323584.02	3.20
		26200118	544785.12	4323587.14	3.20
		26200117	544785.39	4323590.33	3.20
		26200116	544787.44	4323686.36	96.06
		26200115	544783.77	4323691.77	6.54
		26200114	544777.00	4323694.30	7.23
		26200113	544772.58	4323696.71	5.03
		26200112	544768.70	4323699.61	4.85
		26200111	544765.00	4323703.28	5.20
		26200110	544761.47	4323708.26	6.11
		26200109	544759.58	4323711.71	3.94
		26200108	544758.12	4323715.64	4.19
		26200107	544757.65	4323717.24	1.67
		26200106	544756.85	4323720.91	3.75
		26200105	544756.72	4323721.78	0.88
		26200104	544756.45	4323725.62	3.85
		26200103	544756.45	4323727.09	1.47
		26200102	544756.75	4323731.37	4.29
		26200101	544757.82	4323736.28	5.03
		26200100	544759.46	4323740.66	4.67
		26200099	544763.19	4323747.18	7.52
		26200098	544765.23	4323749.71	3.25
		26200097	544769.46	4323753.75	5.85
		26200096	544774.28	4323757.04	5.84
		26200095	544779.58	4323759.48	5.84
		26200094	544785.21	4323761.01	5.84
		26200093	544791.02	4323761.60	5.84
		26200092	544796.84	4323761.22	5.84
		26200091	544802.52	4323759.88	3.82
		26200090	544806.05	4323758.40	5.38

İMAR PARSELLERİ ALAN HESABI

12

Ada Parsel	Hesap Alan	Nokta No	Y	X	Cephe
		26200089	544810.70	4323755.70	3.55
		26200088	544813.58	4323753.62	3.55
		26200087	544816.23	4323751.26	3.55
		26200086	544818.62	4323748.64	3.55
		26200085	544820.74	4323745.79	3.55
		26200084	544822.56	4323742.74	3.55
		26200083	544824.06	4323739.52	6.37
		26200082	544826.16	4323733.51	11.09
		26200081	544826.67	4323722.43	6.44
		26200080	544825.12	4323716.17	6.76
		26200079	544822.82	4323709.82	7.12
		26200078	544818.67	4323704.03	4.52
		26200077	544815.53	4323700.78	7.40
		26200076	544809.87	4323696.02	5.38
		26200075	544807.55	4323691.17	63.78
		26200074	544806.19	4323627.40	40.65
		26200073	544805.32	4323586.76	3.96
		26200072	544805.05	4323582.81	3.96
		26200071	544804.41	4323578.90	3.96
		26200070	544803.41	4323575.07	3.96
		26200069	544802.05	4323571.35	3.96
		26200068	544800.35	4323567.77	3.96
		26200067	544798.32	4323564.37	3.96
		26200066	544795.98	4323561.18	3.96
		26200065	544793.35	4323558.22	3.96
		26200064	544790.45	4323555.52	3.96
		26200063	544787.32	4323553.10	3.96
		26200062	544783.97	4323550.99	3.96
		26200061	544780.43	4323549.20	3.96
		26200060	544776.75	4323547.75	3.96
		26200059	544772.94	4323546.65	3.96
		26200058	544769.05	4323545.91	3.96
		26200057	544765.11	4323545.54	88.05
		26200056	544677.16	4323541.49	2.42
		26200055	544674.76	4323541.18	2.42
		26200054	544672.45	4323540.47	2.42
		26200053	544670.30	4323539.38	2.42
		26200052	544668.35	4323537.95	2.42
		26200051	544666.68	4323536.21	2.42
		26200050	544665.32	4323534.21	2.42
		26200049	544664.31	4323532.01	2.42
		26200048	544663.69	4323529.68	2.42
		26200047	544663.46	4323527.28	2.42
		26200046	544663.65	4323524.87	2.42
		26200045	544664.23	4323522.52	2.37
		26200044	544665.17	4323520.36	35.88
		26200043	544682.22	4323488.78	7.98
		26200042	544686.02	4323481.77	2.77
		26200041	544687.50	4323479.43	2.77
		26200040	544689.30	4323477.31	2.77
		26200039	544691.37	4323475.47	2.77
		26200038	544693.68	4323473.93	2.77

İMAR PARSELLERİ ALAN HESABI

13

Ada Parsel	Hesap Alan	Nokta No	Y	X	Cephe
		26200037	544696.17	4323472.73	2.77
		26200036	544698.81	4323471.88	2.77
		26200035	544701.55	4323471.40	2.77
		26200034	544704.32	4323471.31	2.77
		26200033	544707.07	4323471.60	2.77
		26200032	544709.76	4323472.27	2.77
		26200031	544712.34	4323473.30	2.77
		26200030	544714.74	4323474.68	80.97
		26200029	544781.99	4323519.78	55.21
		26200028	544829.71	4323547.56	42.41
		26200027	544866.45	4323568.74	42.48
		26200026	544901.58	4323592.63	5.87
		26200025	544898.66	4323597.72	34.42
		26200024	544928.41	4323615.03	17.74
		26200023	544943.90	4323623.68	17.74
		26200022	544959.53	4323632.07	17.74
		26200021	544975.30	4323640.19	17.74
		26200020	544991.20	4323648.04	17.74
		26200019	545007.24	4323655.61	35.31
		26200018	545039.54	4323669.87	118.26
		26200017	545148.53	4323715.77	17.08
		26200016	545142.18	4323731.63	84.36
		26200015	545219.93	4323764.37	16.02
		26200014	545234.43	4323771.18	15.87
		26200013	545248.19	4323779.09	18.34
		26200012	545263.23	4323789.58	14.78
		26200011	545274.59	4323799.04	15.53
		26200010	545285.72	4323809.86	12.46
		26200009	545294.00	4323819.17	17.34
		26200008	545304.50	4323832.97	15.89
		26200007	545313.02	4323846.38	20.33
		26200006	545322.27	4323864.48	19.01
		26200005	545329.18	4323882.19	20.95
		26200004	545334.75	4323902.39	16.14
		26200003	545337.55	4323918.29	19.05
		26200002	545339.10	4323937.28	15.71

EBÜN HARİTA MÜHENDİSLİK
Ali Ateş
Harita Müh. (Mühür) Kat:2 No:7-TUNCELİ
Dip. No: 63852

Mahmut N. ÖZİ ÖTAŞ
Harita Müh.
Dip. No: 63852

DOP
HESABI

Toplam Tahsis	=	418909.05		
Toplam İmar Ada Alanı	=	418909.05		
Toplam Ortak Katılım Alanı	=	0.00		
Toplam Düzenlemeye Giren (Dopal)	=	447712.53		
Toplam Düzenlemeye Giren (Dopalma)	=	0.00		
Toplam Kamulaştırılan Alan	=	0.00		
Toplam Bağışlanan Alan	=	0.00		
Toplam Kadastro Parsel Alanı	=	537092.19		
Toplam Pay	=	537092.19		
Ortak Katılım Oranı	=	0.0000000		
Düzenleme Ortaklık Payı Oranı (DOPO)	=	0.0643348		
DOPÇ(OKO ile birlikte)	=	0.0643348		
Maksimum Dop Oranı	=	0.45		
Düzenleme Ortaklık Payı Hesabı				
Kamuya Ayrılan Alan	=	447712.53	-	418909.05 = 28803.48
Düzenleme Ortaklık Payı	=	28803.48	/	447712.53 = 0.0643348

DÜZGÜN HARİTA MÜHENDİSLİK
Ali Kistemur
Moğulçay Mah. Aşa Sok. Hürriyet Çarşısı B. Blok Kat:2 No:7 - TUNCELİ
Tel : 0428 627 61 61 / 6537 502 59 48
Oda Sicil No: 74055 Tunceli V. 15 175 027 70 17

Mahmut M. ÖZİ ÖTAŞ
Mahmut M. ÖZİ ÖTAŞ
Harita Müh.
Dip. No: 63852

İMAR
ADALARI
LİSTESİ

İmar Adaları Listesi

SAYFA NO:1

Sıra	AdaNo	Alan	Kalan	Pafta	Açıklama	Cinsi	Okof
1	2620/1	13631.00	0.00				
2	2620/3	32691.88	0.00				
3	2620/5	372586.17	-0.00				

ALİ AYTEMUR-DÜZGÜN HARİTA NI For Windows

DÜZGÜN HARİTA MÜHENDİSLİK
Ali Aytemur
Moğulçay Mah. Ata Sok. Hüseyin Güneşin İş Merkezi Kat:2 No:7-TUNCELİ
Tel : 0428 212 81 41 / Faks : 0537 507 97 48
Oda Sicil No: 14865 / Tunceli / D. 175 027 7977

Mahmut N. ÖZİ ÖTAŞ
Mahmut N. ÖZİ ÖTAŞ
Harita Müh.
Dip. No: 63852

ADA
DAĞITIM
CETVELİ

2620 NUMARALADA DAĞITIM CETVELİ

KADS. ADA	140	140	140	140	140	140	140	140	140	140	140	140	140
KADS. PAR	39	45	46	47	48	49	50	51	52	53	54	55	
İ.Parseli													ALAN
1	13268.53	362.47											
3		32691.88											
5		106266.81	7070.76	7366.42	7368.79	6616.73	6984.06	12107.78	8034.16	8999.87	20791.82	9218.57	
ALAN	13268.53	139321.16	7070.76	7366.42	7368.79	6616.73	6984.06	12107.78	8034.16	8999.87	20791.82	9218.57	
DiğADALAR													
İ.TAHSİS	13268.53	139321.16	7070.76	7366.42	7368.79	6616.73	6984.06	12107.78	8034.16	8999.87	20791.82	9218.57	
KAMULAŞ.	-	-	-	-	-	-	-	-	-	-	-	-	-
DOP	912.32	9579.49	486.17	506.50	506.67	454.95	480.21	832.51	552.41	618.82	1429.61	633.85	
DGİREN.	14180.85	148900.66	7556.93	7872.92	7875.46	7071.68	7464.27	12940.29	8586.57	9618.69	22221.43	9852.42	
DGİRMEYEN	4073.00	38793.35	-	-	-	-	-	-	-	-	-	-	-
TAPUALANI	18253.85	187694.01	7556.93	7872.92	7875.46	7071.68	7464.27	12940.29	8586.57	9618.69	22221.43	9852.42	
Cetveli Tazim Eden			Cetveli Kontrol Eden				Cetveli Tasdik Eden						
İsim	Tarih	İmza	İsim	Tarih	İmza	İsim	Tarih	İmza					
İmar Tatbikat Planı Tasdiki		Parselasyon Haritasının Tasdiki		İlanın Neşri		İlanın Tahtaya							
Bel. Mec.	Bakanlık	Belediye Encümeni	Gazetesi	Gazetesi	Asılması	İndirilmesi							
Tarih													
Sayı													

ALI AYTEMUR-DÜZGÜN HARİTA NI For Windows

KADASTRO
KAYITLARI
ÖZETİ

TOPLAMALAN : 537092.19 TOPLAMPAY : 537092.19 TOPLAMKAMULAŞTIRMA : 0.00 TOP. DÜZENLE.GİRMEYEN: 89379.66 TOP. DÜZENLEMEYGİREN: 447712.53				KADASTRO KAYITLARI ÖZETİ			SAYFANO:1 İLİ : TUNCELİ İLÇESİ : MERKEZ KÖY/MAH.: AKTULUK	
SNo	Pafta	Ada/Par	Alan	Hisse	Malik	Babası	Pay	Cinsi
16		140/45	187694.01	TAM	MALİYE HAZİNESİ		187694.01	ARSA
1		140/230	174725.81	TAM	MALİYE HAZİNESİ		174725.81	HAMTOPRAK
8		140/51	12940.29	TAM	TUNCELİ ÜNİVERSİTESİ		12940.29	TARLA
11		140/55	9852.42	TAM	TUNCELİ ÜNİVERSİTESİ		9852.42	TARLA
12		140/56	15081.14	TAM	TUNCELİ ÜNİVERSİTESİ		15081.14	TARLA
7		140/50	7464.27	TAM	TUNCELİ ÜNİVERSİTESİ		7464.27	TARLA
14		140/58	7541.34	TAM	TUNCELİ ÜNİVERSİTESİ		7541.34	TARLA
2		140/231	17874.55	TAM	MALİYE HAZİNESİ		17874.55	HAMTOPRAK
3		140/46	7556.93	TAM	TUNCELİ ÜNİVERSİTESİ		7556.93	TARLA
4		140/47	7872.92	TAM	TUNCELİ ÜNİVERSİTESİ		7872.92	TARLA
5		140/48	7875.46	TAM	TUNCELİ ÜNİVERSİTESİ		7875.46	TARLA
6		140/49	7071.68	TAM	TUNCELİ ÜNİVERSİTESİ		7071.68	TARLA
9		140/52	8586.57	TAM	TUNCELİ ÜNİVERSİTESİ		8586.57	TARLA
15		140/60	2251.70	TAM	TUNCELİ ÜNİVERSİTESİ		2251.70	SUSUZTARLA
18		140/54	22221.43	TAM	MALİYE HAZİNESİ		22221.43	HALIARAZI
10		140/53	9618.69	TAM	TUNCELİ ÜNİVERSİTESİ		9618.69	TARLA
13		140/57	12609.13	TAM	TUNCELİ ÜNİVERSİTESİ		12609.13	TARLA
17		140/39	18253.85	TAM	MALİYE HAZİNESİ		18253.85	ARSA

ALİ AYTEMUR-DÜZGÜN HARİTA NI For Windows

DÜZGÜN HARİTA MÜHENDİSLİK
Ali Aytemur
Mojukay Mah. Ata Sok. Hüsrevin Çarşısı No:1 Kat:2 No:7 - TUNCELİ
Tel. : 0428 212 61 41 / 0532 507 99 48
Dda Sicil No: 14026 / Tunceli M. D. 175 027 797

Mahmut N. ÖZLÜTAŞ
Mahmut N. ÖZLÜTAŞ
Harita Müh.
Dip. No: 63852

MAL
SAHİPLERİ
ARAŞTIRMA
VE ÖZET
FORMU

TOPLAMLAN : 537092.19
TOPLAMPAY : 537092.19
TOPLANKAMULAŞTIRMA : 0.00
TOP. DÜZENLE.GİRMEYEN: 89379.66
TOP. DÜZENLEMEYSİREN: 447712.53

MAL SAHİPLERİ ARAŞTIRMA
VE
ÖZET FORMU
(KADASTROPARSELNESIRALI)

SAYFANO:1

TOPLAMADA ALANI : 418909.05
O.KATILIM ORANI : 0.0000000
D.O.PAYI ORANI : 0.0643348

K A D A S T R O

İ M A R

SNo	Pafta	Ada/Par	Alan/Pay	Hisse	Malik/Baba Adı	Kamu	Dop/İTh	Ada/Par	Alan	Hisse	Pay
16		140/45	187694.01 187694.01	TAM	MALİYE HAZİNESİ	-	9579.49 139321.16	2620/1 2620/3 2620/5	13631.00 32691.88 372586.17	36247/1363100 TAM 10626681/372586	362.47 32691.88 106266.81
1		140/230	174725.81 174725.81	TAM	MALİYE HAZİNESİ	-	8248.52 119963.97	2620/5	372586.17	11996397/372586	119963.97
8		140/51	12940.29 12940.29	TAM	TUNCELİ ÜNİVERSİTESİ	-	832.51 12107.78	2620/5	372586.17	1210778/3725861	12107.78
11		140/55	9852.42 9852.42	TAM	TUNCELİ ÜNİVERSİTESİ	-	633.85 9218.57	2620/5	372586.17	921857/37258617	9218.57
12		140/56	15081.14 15081.14	TAM	TUNCELİ ÜNİVERSİTESİ	-	970.24 14110.90	2620/5	372586.17	1411090/3725861	14110.90
7		140/50	7464.27 7464.27	TAM	TUNCELİ ÜNİVERSİTESİ	-	480.21 6984.06	2620/5	372586.17	698406/37258617	6984.06
14		140/58	7541.34 7541.34	TAM	TUNCELİ ÜNİVERSİTESİ	-	485.17 7056.17	2620/5	372586.17	705617/37258617	7056.17
2		140/231	17874.55 17874.55	TAM	MALİYE HAZİNESİ	-	1149.95 16724.60	2620/5	372586.17	1672460/3725861	16724.60
3		140/46	7556.93 7556.93	TAM	TUNCELİ ÜNİVERSİTESİ	-	486.17 7070.76	2620/5	372586.17	707076/37258617	7070.76
4		140/47	7872.92 7872.92	TAM	TUNCELİ ÜNİVERSİTESİ	-	506.50 7366.42	2620/5	372586.17	736642/37258617	7366.42
5		140/48	7875.46 7875.46	TAM	TUNCELİ ÜNİVERSİTESİ	-	506.67 7368.79	2620/5	372586.17	736879/37258617	7368.79
6		140/49	7071.68 7071.68	TAM	TUNCELİ ÜNİVERSİTESİ	-	454.95 6616.73	2620/5	372586.17	661673/37258617	6616.73
9		140/52	8586.57 8586.57	TAM	TUNCELİ ÜNİVERSİTESİ	-	552.41 8034.16	2620/5	372586.17	803416/37258617	8034.16
15		140/60	2251.70 2251.70	TAM	TUNCELİ ÜNİVERSİTESİ	-	144.86 2106.84	2620/5	372586.17	210684/37258617	2106.84
18		140/54	22221.43 22221.43	TAM	MALİYE HAZİNESİ	-	1429.61 20791.82	2620/5	372586.17	2079182/3725861	20791.82
10		140/53	9618.69 9618.69	TAM	TUNCELİ ÜNİVERSİTESİ	-	618.82 8999.87	2620/5	372586.17	899987/37258617	8999.87
13		140/57	12609.13 12609.13	TAM	TUNCELİ ÜNİVERSİTESİ	-	811.21 11797.92	2620/5	372586.17	1179792/3725861	11797.92

DÜZGÜN HARİTA MÜHENDİSLİK

Ali Aytemur

Mogulday Mah. Aza Sok. Hisyinin Çarşısı / Hisyinci Kat 2 No: 7- TUNCELİ
Tel. : 0428 212 67 41 / 0547 507 99 48
Oda Sicil No: 1409 / Tunceli / 0 175 027 7917

Mahmut N. ÖZİ TAŞ
Harita Müh.
Dip. No: 63852

ÖZET
CETVELİ
KADASTRO

İLİ : TUNCELİ
İLÇESİ : MERKEZ
KÖY/MAH. : AKTULUK
T.C.

SAYFA NO:1

BELEDİYESİ

NOLU UYGULAMA SAHASI

ÖZET CETVELİ

KADASTRO

Ada/Par	Alan	EskiDop	Kamu.	Bağış.	D.Girmeyen	Dopal	Dopalma	Dop	İ.Tahsis
140/45	187694.01	-	-	-	38793.35	148900.66	-	9579.49	139321.16
140/230	174725.81	-	-	-	46513.31	128212.50	-	8248.52	119963.97
140/51	12940.29	-	-	-	-	12940.29	-	832.51	12107.78
140/55	9852.42	-	-	-	-	9852.42	-	633.85	9218.57
140/56	15081.14	-	-	-	-	15081.14	-	970.24	14110.90
140/50	7464.27	-	-	-	-	7464.27	-	480.21	6984.06
140/58	7541.34	-	-	-	-	7541.34	-	485.17	7056.17
140/231	17874.55	-	-	-	-	17874.55	-	1149.95	16724.60
140/46	7556.93	-	-	-	-	7556.93	-	486.17	7070.76
140/47	7872.92	-	-	-	-	7872.92	-	506.50	7366.42
140/48	7875.46	-	-	-	-	7875.46	-	506.67	7368.79
140/49	7071.68	-	-	-	-	7071.68	-	454.95	6616.73
140/52	8586.57	-	-	-	-	8586.57	-	552.41	8034.16
140/60	2251.70	-	-	-	-	2251.70	-	144.86	2106.84
140/54	22221.43	-	-	-	-	22221.43	-	1429.61	20791.82
140/53	9618.69	-	-	-	-	9618.69	-	618.82	8999.87
140/57	12609.13	-	-	-	-	12609.13	-	811.21	11797.92
140/39	18253.85	-	-	-	4073.00	14180.85	-	912.32	13268.53

ALI AYTEMUR-DÜZGÜN HARİTA Nİ For Windows

DÜZGÜN HARİTA MÜHENDİSLİK
Ali Aytemur
Moğultay Mah. Atı Sok. Hüseyin Güneş Sok. Merkez Kat 2 No: 7- TUNCELİ
Tel. : 0428 217 41 41 / 0428 217 507 99 48
Oda Sicil No: 16794 Tunceli D-1750277917

Mahmut N. ÖZİ ÖTAŞ
Mahmut N. ÖZİ ÖTAŞ
Harita Müh.
Dip. No: 63852

İLİ : TUNCELI
İLÇESİ : MERKEZ
KÖYÜ/MAHALLESİ AKTULUK
T.C. BELEDİYESİ NOLU UYGULAMA SAHASI

SAYFANO:1

ÖZET CETVELİ

KADASTRO

İ M A R

Ada/Par	Alan	Kamu.	Y.Terk	D.Girmeyen	Dopal	Dopalma	Dop	İ.Tahsis	AdaNo	Alan
140/39	18253.85	-	-	4073.00	14180.85	-	912.32	13268.53	2620	418909.05
140/45	187694.01	-	-	38793.35	148900.66	-	9579.49	139321.16		
140/46	7556.93	-	-	-	7556.93	-	486.17	7070.76		
140/47	7872.92	-	-	-	7872.92	-	506.50	7366.42		
140/48	7875.46	-	-	-	7875.46	-	506.67	7368.79		
140/49	7071.68	-	-	-	7071.68	-	454.95	6616.73		
140/50	7464.27	-	-	-	7464.27	-	480.21	6984.06		
140/51	12940.29	-	-	-	12940.29	-	832.51	12107.78		
140/52	8586.57	-	-	-	8586.57	-	552.41	8034.16		
140/53	9618.69	-	-	-	9618.69	-	618.82	8999.87		
140/54	22221.43	-	-	-	22221.43	-	1429.61	20791.82		
140/55	9852.42	-	-	-	9852.42	-	633.85	9218.57		
140/56	15081.14	-	-	-	15081.14	-	970.24	14110.90		
140/57	12609.13	-	-	-	12609.13	-	811.21	11797.92		
140/58	7541.34	-	-	-	7541.34	-	485.17	7056.17		
140/60	2251.70	-	-	-	2251.70	-	144.86	2106.84		
140/230	174725.81	-	-	46513.31	128212.50	-	8248.52	119963.97		
140/231	17874.55	-	-	-	17874.55	-	1149.95	16724.60		

KADASTRO TOPLAMLARI

İ M A R

Toplam Pay	Toplam Alan	Top Kamu	Toplam Y.Terk	Toplam D.Girmeyen	Toplam Dopal	Top. Düz. Giren Dopalma	Dop	Toplam Tahsis	Toplam Alan
537092.19	537092.19	0.00	0.00	89379.66	447712.53	-	28803.48	418909.05	418909.05

Düzenleme Ortaklık Payı Hesabı

Kamuya Ayrılan Alan = 447712.53 - 418909.05 = 28803.48

Düzenleme Ortaklık Payı = 28803.48 / 447712.53 = 0.0643348

DÜZGÜN HARİTA MÜHENDİSLİK
Ali Aytemir
Mojukay Mah. Ara Sok. Hüseyin Dündar İş Merkezi Kat:2 No:7- TUNCELI
Tel : 0428 217611 / 0428 0937 507 99 48
Oda Sicil No: 10095 / Tunceli / 0 35 027 79 44

Mahmut N. ÖZİ ÖTAŞ
Mahmut N. ÖZİ ÖTAŞ
Harita Müh.
Dip. No: 63852

İLİ : TUNCELI
İLÇESİ : MERKEZ
KÖYÜ/MAHALLESİ AKTULUK
T.C. BELEDİYESİ NOLUYGULAMA BAHASI

SAYFANO:1

ÖZET CETVELİ

KADASTRO

İ M A R

Ada/Par	Alan	Kamu.	Y.Terk	D.Girmeyen	Dopal	Dopalma	Dop	İ.Tahsis	AdaNo	Alan
140/39	18253.85	-	-	4073.00	14180.85	-	912.32	13268.53	2620	418909.05
140/45	187694.01	-	-	38793.35	148900.66	-	9579.49	139321.16		
140/46	7556.93	-	-	-	7556.93	-	486.17	7070.76		
140/47	7872.92	-	-	-	7872.92	-	506.50	7366.42		
140/48	7875.46	-	-	-	7875.46	-	506.67	7368.79		
140/49	7071.68	-	-	-	7071.68	-	454.95	6616.73		
140/50	7464.27	-	-	-	7464.27	-	480.21	6984.06		
140/51	12940.29	-	-	-	12940.29	-	832.51	12107.78		
140/52	8586.57	-	-	-	8586.57	-	552.41	8034.16		
140/53	9618.69	-	-	-	9618.69	-	618.82	8999.87		
140/54	22221.43	-	-	-	22221.43	-	1429.61	20791.82		
140/55	9852.42	-	-	-	9852.42	-	633.85	9218.57		
140/56	15081.14	-	-	-	15081.14	-	970.24	14110.90		
140/57	12609.13	-	-	-	12609.13	-	811.21	11797.92		
140/58	7541.34	-	-	-	7541.34	-	485.17	7056.17		
140/60	2251.70	-	-	-	2251.70	-	144.86	2106.84		
140/230	174725.81	-	-	46513.31	128212.50	-	8248.52	119963.97		
140/231	17874.55	-	-	-	17874.55	-	1149.95	16724.60		

KADASTRO TOPLAMLARI

İ M A R

Toplam Pay	Toplam Alan	Top Kamu	Toplam Y.Terk	Toplam D.Girmeyen	Toplam Dopal	Top. Düz. Giren Dopalma	Dop	Toplam Tahsis	Toplam Alan
537092.19	537092.19	0.00	-	89379.66	447712.53	-	28803.48	418909.05	418909.05

Düzenleme Ortaklık Payı Hesabı

Kamuya Ayrılan Alan = 447712.53 - 418909.05 = 28803.48

Düzenleme Ortaklık Payı = 28803.48 / 447712.53 = 0.0643348

ALİ AYTEMUR-DÜZGÜN HARİTA Nİ For Windows

DÜZGÜN HARİTA MÜHENDİSLİK

Ali Aytemur

Mojlukay Mah. Ata Sok. Hisarlı Çarşı 4. Blok Kat:2 No:7- TUNCELI
Tel : 0428 217614 / 217615 / 217616 / 217617 / 217618 / 217619 / 217620 / 217621 / 217622 / 217623 / 217624 / 217625 / 217626 / 217627 / 217628 / 217629 / 217630 / 217631 / 217632 / 217633 / 217634 / 217635 / 217636 / 217637 / 217638 / 217639 / 217640 / 217641 / 217642 / 217643 / 217644 / 217645 / 217646 / 217647 / 217648 / 217649 / 217650 / 217651 / 217652 / 217653 / 217654 / 217655 / 217656 / 217657 / 217658 / 217659 / 217660 / 217661 / 217662 / 217663 / 217664 / 217665 / 217666 / 217667 / 217668 / 217669 / 217670 / 217671 / 217672 / 217673 / 217674 / 217675 / 217676 / 217677 / 217678 / 217679 / 217680 / 217681 / 217682 / 217683 / 217684 / 217685 / 217686 / 217687 / 217688 / 217689 / 217690 / 217691 / 217692 / 217693 / 217694 / 217695 / 217696 / 217697 / 217698 / 217699 / 217700 / 217701 / 217702 / 217703 / 217704 / 217705 / 217706 / 217707 / 217708 / 217709 / 217710 / 217711 / 217712 / 217713 / 217714 / 217715 / 217716 / 217717 / 217718 / 217719 / 217720 / 217721 / 217722 / 217723 / 217724 / 217725 / 217726 / 217727 / 217728 / 217729 / 217730 / 217731 / 217732 / 217733 / 217734 / 217735 / 217736 / 217737 / 217738 / 217739 / 217740 / 217741 / 217742 / 217743 / 217744 / 217745 / 217746 / 217747 / 217748 / 217749 / 217750 / 217751 / 217752 / 217753 / 217754 / 217755 / 217756 / 217757 / 217758 / 217759 / 217760 / 217761 / 217762 / 217763 / 217764 / 217765 / 217766 / 217767 / 217768 / 217769 / 217770 / 217771 / 217772 / 217773 / 217774 / 217775 / 217776 / 217777 / 217778 / 217779 / 217780 / 217781 / 217782 / 217783 / 217784 / 217785 / 217786 / 217787 / 217788 / 217789 / 217790 / 217791 / 217792 / 217793 / 217794 / 217795 / 217796 / 217797 / 217798 / 217799 / 217800 / 217801 / 217802 / 217803 / 217804 / 217805 / 217806 / 217807 / 217808 / 217809 / 217810 / 217811 / 217812 / 217813 / 217814 / 217815 / 217816 / 217817 / 217818 / 217819 / 217820 / 217821 / 217822 / 217823 / 217824 / 217825 / 217826 / 217827 / 217828 / 217829 / 217830 / 217831 / 217832 / 217833 / 217834 / 217835 / 217836 / 217837 / 217838 / 217839 / 217840 / 217841 / 217842 / 217843 / 217844 / 217845 / 217846 / 217847 / 217848 / 217849 / 217850 / 217851 / 217852 / 217853 / 217854 / 217855 / 217856 / 217857 / 217858 / 217859 / 217860 / 217861 / 217862 / 217863 / 217864 / 217865 / 217866 / 217867 / 217868 / 217869 / 217870 / 217871 / 217872 / 217873 / 217874 / 217875 / 217876 / 217877 / 217878 / 217879 / 217880 / 217881 / 217882 / 217883 / 217884 / 217885 / 217886 / 217887 / 217888 / 217889 / 217890 / 217891 / 217892 / 217893 / 217894 / 217895 / 217896 / 217897 / 217898 / 217899 / 217900 / 217901 / 217902 / 217903 / 217904 / 217905 / 217906 / 217907 / 217908 / 217909 / 217910 / 217911 / 217912 / 217913 / 217914 / 217915 / 217916 / 217917 / 217918 / 217919 / 217920 / 217921 / 217922 / 217923 / 217924 / 217925 / 217926 / 217927 / 217928 / 217929 / 217930 / 217931 / 217932 / 217933 / 217934 / 217935 / 217936 / 217937 / 217938 / 217939 / 217940 / 217941 / 217942 / 217943 / 217944 / 217945 / 217946 / 217947 / 217948 / 217949 / 217950 / 217951 / 217952 / 217953 / 217954 / 217955 / 217956 / 217957 / 217958 / 217959 / 217960 / 217961 / 217962 / 217963 / 217964 / 217965 / 217966 / 217967 / 217968 / 217969 / 217970 / 217971 / 217972 / 217973 / 217974 / 217975 / 217976 / 217977 / 217978 / 217979 / 217980 / 217981 / 217982 / 217983 / 217984 / 217985 / 217986 / 217987 / 217988 / 217989 / 217990 / 217991 / 217992 / 217993 / 217994 / 217995 / 217996 / 217997 / 217998 / 217999 / 218000 / 218001 / 218002 / 218003 / 218004 / 218005 / 218006 / 218007 / 218008 / 218009 / 218010 / 218011 / 218012 / 218013 / 218014 / 218015 / 218016 / 218017 / 218018 / 218019 / 218020 / 218021 / 218022 / 218023 / 218024 / 218025 / 218026 / 218027 / 218028 / 218029 / 218030 / 218031 / 218032 / 218033 / 218034 / 218035 / 218036 / 218037 / 218038 / 218039 / 218040 / 218041 / 218042 / 218043 / 218044 / 218045 / 218046 / 218047 / 218048 / 218049 / 218050 / 218051 / 218052 / 218053 / 218054 / 218055 / 218056 / 218057 / 218058 / 218059 / 218060 / 218061 / 218062 / 218063 / 218064 / 218065 / 218066 / 218067 / 218068 / 218069 / 218070 / 218071 / 218072 / 218073 / 218074 / 218075 / 218076 / 218077 / 218078 / 218079 / 218080 / 218081 / 218082 / 218083 / 218084 / 218085 / 218086 / 218087 / 218088 / 218089 / 218090 / 218091 / 218092 / 218093 / 218094 / 218095 / 218096 / 218097 / 218098 / 218099 / 218100 / 218101 / 218102 / 218103 / 218104 / 218105 / 218106 / 218107 / 218108 / 218109 / 218110 / 218111 / 218112 / 218113 / 218114 / 218115 / 218116 / 218117 / 218118 / 218119 / 218120 / 218121 / 218122 / 218123 / 218124 / 218125 / 218126 / 218127 / 218128 / 218129 / 218130 / 218131 / 218132 / 218133 / 218134 / 218135 / 218136 / 218137 / 218138 / 218139 / 218140 / 218141 / 218142 / 218143 / 218144 / 218145 / 218146 / 218147 / 218148 / 218149 / 218150 / 218151 / 218152 / 218153 / 218154 / 218155 / 218156 / 218157 / 218158 / 218159 / 218160 / 218161 / 218162 / 218163 / 218164 / 218165 / 218166 / 218167 / 218168 / 218169 / 218170 / 218171 / 218172 / 218173 / 218174 / 218175 / 218176 / 218177 / 218178 / 218179 / 218180 / 218181 / 218182 / 218183 / 218184 / 218185 / 218186 / 218187 / 218188 / 218189 / 218190 / 218191 / 218192 / 218193 / 218194 / 218195 / 218196 / 218197 / 218198 / 218199 / 218200 / 218201 / 218202 / 218203 / 218204 / 218205 / 218206 / 218207 / 218208 / 218209 / 218210 / 218211 / 218212 / 218213 / 218214 / 218215 / 218216 / 218217 / 218218 / 218219 / 218220 / 218221 / 218222 / 218223 / 218224 / 218225 / 218226 / 218227 / 218228 / 218229 / 218230 / 218231 / 218232 / 218233 / 218234 / 218235 / 218236 / 218237 / 218238 / 218239 / 218240 / 218241 / 218242 / 218243 / 218244 / 218245 / 218246 / 218247 / 218248 / 218249 / 218250 / 218251 / 218252 / 218253 / 218254 / 218255 / 218256 / 218257 / 218258 / 218259 / 218260 / 218261 / 218262 / 218263 / 218264 / 218265 / 218266 / 218267 / 218268 / 218269 / 218270 / 218271 / 218272 / 218273 / 218274 / 218275 / 218276 / 218277 / 218278 / 218279 / 218280 / 218281 / 218282 / 218283 / 218284 / 218285 / 218286 / 218287 / 218288 / 218289 / 218290 / 218291 / 218292 / 218293 / 218294 / 218295 / 218296 / 218297 / 218298 / 218299 / 218300 / 218301 / 218302 / 218303 / 218304 / 218305 / 218306 / 218307 / 218308 / 218309 / 218310 / 218311 / 218312 / 218313 / 218314 / 218315 / 218316 / 218317 / 218318 / 218319 / 218320 / 218321 / 218322 / 218323 / 218324 / 218325 / 218326 / 218327 / 218328 / 218329 / 218330 / 218331 / 218332 / 218333 / 218334 / 218335 / 218336 / 218337 / 218338 / 218339 / 218340 / 218341 / 218342 / 218343 / 218344 / 218345 / 218346 / 218347 / 218348 / 218349 / 218350 / 218351 / 218352 / 218353 / 218354 / 218355 / 218356 / 218357 / 218358 / 218359 / 218360 / 218361 / 218362 / 218363 / 218364 / 218365 / 218366 / 218367 / 218368 / 218369 / 218370 / 218371 / 218372 / 218373 / 218374 / 218375 / 218376 / 218377 / 218378 / 218379 / 218380 / 218381 / 218382 / 218383 / 218384 / 218385 / 218386 / 218387 / 218388 / 218389 / 218390 / 218391 / 218392 / 218393 / 218394 / 218395 / 218396 / 218397 / 218398 / 218399 / 218400 / 218401 / 218402 / 218403 / 218404 / 218405 / 218406 / 218407 / 218408 / 218409 / 218410 / 218411 / 218412 / 218413 / 218414 / 218415 / 218416 / 218417 / 218418 / 218419 / 218420 / 218421 / 218422 / 218423 / 218424 / 218425 / 218426 / 218427 / 218428 / 218429 / 218430 / 218431 / 218432 / 218433 / 218434 / 218435 / 218436 / 218437 / 218438 / 218439 / 218440 / 218441 / 218442 / 218443 / 218444 / 218445 / 218446 / 218447 / 218448 / 218449 / 218450 / 218451 / 218452 / 218453 / 218454 / 218455 / 218456 / 218457 / 218458 / 218459 / 218460 / 218461 / 218462 / 218463 / 218464 / 218465 / 218466 / 218467 / 218468 / 218469 / 218470 / 218471 / 218472 / 218473 / 218474 / 218475 / 218476 / 218477 / 218478 / 218479 / 218480 / 218481 / 218482 / 218483 / 218484 / 218485 / 218486 / 218487 / 218488 / 218489 / 218490 / 218491 / 218492 / 218493 / 218494 / 218495 / 218496 / 218497 / 218498 / 218499 / 218500 / 218501 / 218502 / 218503 / 218504 / 218505 / 218506 / 218507 / 218508 / 218509 / 218510 / 218511 / 218512 / 218513 / 218514 / 218515 / 218516 / 218517 / 218518 / 218519 / 218520 / 218521 / 218522 / 218523 / 218524 / 218525 / 218526 / 218527 / 218528 / 218529 / 218530 / 218531 / 218532 / 218533 / 218534 / 218535 / 218536 / 218537 / 218538 / 218539 / 218540 / 218541 / 218542 / 218543 / 218544 / 218545 / 218546 / 218547 / 218548 / 218549 / 218550 / 218551 / 218552 / 218553 / 218554 / 218555 / 218556 / 218557 / 218558 / 218559 / 218560 / 218561 / 218562 / 218563 / 218564 / 218565 / 218566 / 218567 / 218568 / 218569 / 218570 / 218571 / 218572 / 218573 / 218574 / 218575 / 218576 / 218577 / 218578 / 218579 / 218580 / 218581 / 218582 / 218583 / 218584 / 218585 / 218586 / 218587 / 218588 / 218589 / 218590 / 218591 / 218592 / 218593 / 218594 / 218595 / 218596 / 218597 / 218598 / 218599 / 218600 / 218601 / 218602 / 218603 / 218604 / 218605 / 218606 / 218607 / 218608 / 218609 / 218610 / 218611 / 218612 / 218613 / 218614 / 218615 / 218616 / 218617 / 218618 / 218619 / 218620 / 218621 / 218622 / 218623 / 218624 / 218625 / 218626 / 218627 / 218628 / 218629 / 218630 / 218631 / 218632 / 218633 / 218634 / 218635 / 218636 / 218637 / 218638 / 218639 / 218640 / 218641 / 218642 / 218643 / 218644 / 218645 / 218646 / 218647 / 218648 / 218649 / 218650 / 218651 / 218652 / 218653 / 218654 / 218655 / 218656 / 218657 / 218658 / 218659 / 218660 / 218661 / 218662 / 218663 / 218664 / 218665 / 218666 / 218667 / 218668 / 218669 / 218670 / 218671 / 218672 / 218673 / 218674 / 218675 / 218676 / 218677 / 218678 / 218679 / 218680 / 218681 / 218682 / 218683 / 218684 / 218685 / 218686 / 218687 / 218688 / 218689 / 218690 / 218691 / 218692 / 218693 / 218694 / 218695 / 218696 / 218697 / 218698 / 218699 / 218700 / 218701 / 218702 / 218703 / 218704 / 218705 / 218706 / 218707 / 218708 / 218709 / 218710 / 218711 / 218712 / 218713 / 218714 / 218715 / 218716 / 218717 / 218718 / 218719 / 218720 / 218721 / 218722 / 218723 / 218724 / 218725 / 218726 / 218727 / 218728 / 218729 / 218730 / 218731 / 218732 / 218733 / 218734 / 218735 / 218736 / 218737 / 218738 / 218739 / 218740 / 218741 / 218742 / 218743 / 218744 / 218745 / 218746 / 218747 / 218748 / 218749 / 218750 / 218751 / 218752 / 218753 / 218754 / 218755 / 218756 / 218757 / 218758 / 218759 / 218760 / 218761 / 218762 / 218763 / 218764 / 218765 / 218766 / 218767 / 218768 / 218769 / 218770 / 218771 / 218772 / 218773 / 218774 / 218775 / 218776 / 218777 / 218778 / 218779 / 218780 / 218781 / 218782 / 218783 / 218784 / 218785 / 218786 / 218787 / 218788 / 218789 / 218790 / 218791 / 218792 / 218793 / 218794 / 218795 / 218796 / 218797 / 218798 / 218799 / 218800 / 218801 / 218802 / 218803 / 218804 / 218805 / 218806 / 218807 / 218808 / 218809 / 218810 / 218811 / 218812 / 218813 / 218814 / 21

TESCİL SAYFASI

İLİ : TUNCELI İLÇESİ : MERKEZ KÖY/MAH. : AKTULUK BELEDİYESİ : PAFTANO :						T E S C İ L S A Y F A S I						SAYFANO:1	
Clt	Syf	ParNo	Alan			Cinsi	Hisse	K A D A S T R O					
			He.	M2	Dm2			KAda	KPar	Cilt	Syf.	Maliki	Babası
		1	1	3631	00	ARSA	1326853/1363100 36247/1363100	140 140	39 45	0 0	- -	MALIYE HAZİNESİ MALIYE HAZİNESİ	
		3	3	2691	88	ARSA	TAM	140	45	0	-	MALIYE HAZİNESİ	
		5	37	2586	17	ARSA	10626681/372586 707076/37258617 736642/37258617 736879/37258617 661673/37258617 698406/37258617 1210778/3725861 803416/37258617 899987/37258617 2079182/3725861 921857/37258617 1411090/3725861 1179792/3725861 705617/37258617 210684/37258617 11996397/372586 1672460/3725861	140 140 140 140 140 140 140 140 140 140 140 140 140 140 140 140 140 140	45 46 47 48 49 50 51 52 53 54 55 56 57 58 60 230 231	0 0 0 0 0 0 0 0 0 0 0 0 0 0 0 0 0 0	- - - - - - - - - - - - - - - - - -	MALIYE HAZİNESİ TUNCELİÜNİVERSİTESİ TUNCELİÜNİVERSİTESİ TUNCELİÜNİVERSİTESİ TUNCELİÜNİVERSİTESİ TUNCELİÜNİVERSİTESİ TUNCELİÜNİVERSİTESİ TUNCELİÜNİVERSİTESİ TUNCELİÜNİVERSİTESİ MALIYE HAZİNESİ TUNCELİÜNİVERSİTESİ TUNCELİÜNİVERSİTESİ TUNCELİÜNİVERSİTESİ TUNCELİÜNİVERSİTESİ TUNCELİÜNİVERSİTESİ MALIYE HAZİNESİ MALIYE HAZİNESİ	

ALI AYTEMUR-DÜZGÜN HARİTA NI For Windows

DÜZGÜN HARİTA MÜHENDİSLİK
Ali Aytemur
Moğolay Mah. Ana Sok. Hıncın Çiğdemli Meydanı Kat:2 No:7 - TUNCELI
Tel : 04286 261111 Faks : 0537 507 99 48
Oda Sicil No: 6095 Tunceli V.D.-425 027 7917

Mahmut N. ÖZİ OTAŞ
Mahmut N. ÖZİ OTAŞ
Harita Müh.
Dip. No: 63852

TESCILE
ESAS
DAĞITIM
CETVELİ

UYGULAMA
SAHASI
TAHSIS
CETVELİ

UYGULAMASAHASI TAHSİS CETVELİ

SAYFA NO: 1

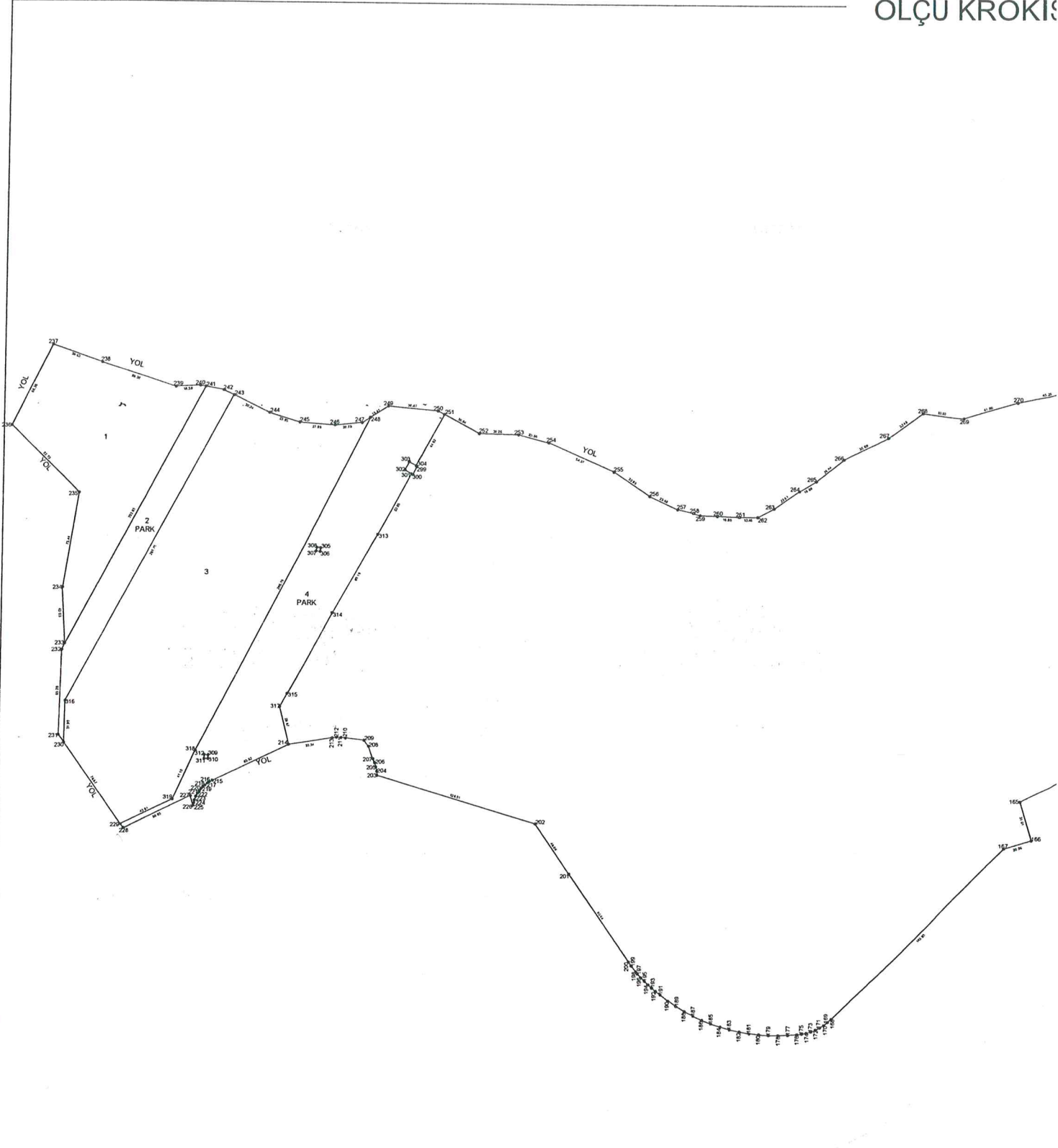
KADASTRO		İMAR ADA NO											K.Par	T		
Ada	Par	2620														
140	39	13268.53														13268.53
140	45	139321.16														139321.16
140	46	7070.76														7070.76
140	47	7366.42														7366.42
140	48	7368.79														7368.79
140	49	6616.73														6616.73
140	50	6984.06														6984.06
140	51	12107.78														12107.78
140	52	8034.16														8034.16
140	53	8999.87														8999.87
140	54	20791.82														20791.82
140	55	9218.57														9218.57
140	56	14110.90														14110.90
140	57	11797.92														11797.92
140	58	7056.17														7056.17
140	60	2106.84														2106.84
140	230	119963.97														119963.97
140	231	16724.60														16724.60
Toplam		418909.05														418909.05

ALİ AYTEMUR-DÜZGÜN HARİTA Nİ For Windows

DÜZGÜN HARİTA MÜHENDİSLİK
Ali Aytemur
Mıncıkay Mah. Ata Sok. Hisarçın Çarşısı İçişleri Kat:2 No: 7- TUNCELİ
Tel: 0428 276161 / 0428 507 99 48
Oda Sicil No: 4024 / M. M. M. D. 135 027 70

Mahmut N. Özi Utaş
Mahmut N. ÖZİ UTAŞ
Harita Müh.
Dip. No: 63852

ÖLÇÜ KROKİSİ



İLİ	: TUNCELİ				
İLÇESİ	: MERKEZ				
MAH./KÖY	: AKTULUK	ADI SOYADI			
Pafta No	:	TARİH			
Ada No	: 2260	İMZA			

DÜZGÜN HARİTA MÜHENDİSLİK
 DÜZENLEYEN
 AİT AKEMUR
 Harita Müh. (TUNCELİ)
 Tel: 0422 2261 11 / 0422 2261 12
 Oda Sicil No: 63852

22.10.2015

Mahmut N. ÖZTÜRK
 Harita Müh.
 Dip. No: 63852

UYGUNDUR
 BELEDİYE/ÖZEL İDARE/PROJE İDARESİ
 KONTROL EDEN
 ONAYLAYAN
 KAI